

TECHNICAL MANUAL

ORGANIZATIONAL MAINTENANCE REPAIR PARTS

AND SPECIAL TOOLS LISTS

FOR

REELING MACHINES, CABLE,

MOTOR DRIVEN RL-172/G

(NSN 3895-00-892-2495)

AND

RL-172A/G

(NSN 3895-00-900-8320)

HEADQUARTERS, DEPARTMENT OF THE ARMY

JULY 1977

**ORGANIZATIONAL MAINTENANCE REPAIR PARTS AND SPECIAL TOOLS LISTS
 FOR
 REELING MACHINES, CABLE, MOTOR DRIVEN
 RL-172/G (NSN 3895-00-892-2495)
 AND
 RL-172A/G (NSN 3895-00-900-8320)**

Current as of 16 March 1977

REPORTING OF ERRORS

You can improve this manual by recommending improvements using DA Form 2028-2 (Test) located in the back of the manual. Simply tear out the self addressed form, fill it out as shown on the sample, fold it where shown, and drop it in the mail.

If there are no blank DA Forms 2028-2 (Test) in the back of your manual, use the standard DA Form 2028 (Recommended Changes to Publications and Blank Forms) and forward to the Commander, US Army Electronics Command, ATTN: DRSEL-MA-Q, Fort Monmouth, NJ 07703.

In either case, a reply will be furnished direct to you.

		Page	Illus Figure
SECTION	I. INTRODUCTION	1	
	II. REPAIR PARTS LIST	5	
Group	00 Reeling Machines, Cable, Motor Driven RL-172/G, RL-172AG	5	1-4
	01 Motor D-C (No parts authorized)		
SECTION	III. SPECIAL TOOLS LIST (Not applicable)		
	IV. NATIONAL STOCK NUMBER AND PART NUMBER INDEX	13	

* This manual supersedes TM 11-3895-207-20P, 16 May 1972.

SECTION I INTRODUCTION

1. Scope

This manual lists spares and repair parts special tools; special test, measurement, and diagnostic equipment (TMDE), and other special support equipment required for performance of organizational maintenance of the RL-172/G and RL-172A/G. It authorizes the requisitioning and issue of spares and repair parts as indicated by the source and maintenance codes.

2. General

This Repair Parts and Special Tools List is divided into the following sections

a. Section II. Repair Parts List. A list of spares and repair parts authorized for use in the performance of maintenance. The list also includes parts which must be removed for replacement of the authorized parts. Parts lists are composed of functional groups in numeric sequence, with the parts in each group listed in figure and item number sequence.

b. Section III. Special Tools List. Not applicable.

c. Section IV. National Stock Number and Part Number Index. A list, in National item identification number (NIIN) sequence, of all National stock numbers (NSN) appearing in the listings, followed by a list, in alphameric sequence, of all part numbers appearing in the listings. National stock numbers and part numbers are cross-referenced to each illustration figure and item number appearance.

3. Explanation of Columns

a. Illustration. This column is divided as follows

(1) *Figure number.* Indicates the figure number of the illustration on which the item is shown.

(2) *Item number.* The number used to identify item called out in the illustration.

b. Source, Maintenance, and Recoverability (SMR) Codes.

(1) *Source code.* Source codes indicate the manner of acquiring support items for maintenance, repair, or overhaul of end items. Source codes are entered in the first and second positions of the Uniform SMR Code format as follows:

<i>Code</i>	<i>Definition</i>
PA-	Item procured and stocked for anticipated or known usage.
XD-A	support item that is not stocked. When required item will be procured through normal supply channels.

NOTE

Cannibalisation or salvage maybe used as a source of supply for any items source coded above except those coded XA and aircraft support items as restricted by AR 700-42.

(2) *Maintenance code.* Maintenance codes are assigned to indicate the levels of maintenance authorized to USE and REPAIR support items. The maintenance codes are entered in the third and fourth positions of the Uniform SMR Code format as follows:

(a) The maintenance code entered in the third position will indicate the lowest maintenance level authorized to remove, replace, and use the support item. The maintenance code entered in the third position will indicate one of the following levels of maintenance:

<i>Code</i>	<i>Application/Explanation</i>
O	-Support item is removed, replaced, used at the organizational level.

(b) The maintenance code entered in the fourth position indicates whether the item is to be repaired and identifies the lowest maintenance level with the capability to perform complete repair (i.e., all authorized maintenance functions). This position will contain one of the following maintenance codes:

<i>Code</i>	<i>Application/Explanation</i>
z	-Nonreparable. No repair is authorized.

(3) *Recoverability code.* Recoverability codes are assigned to support items to indicate the disposition action on unserviceable items. The recoverability code is entered in the fifth position of the Uniform SMR Code format as follows:

<i>Recoverability codes</i>	<i>Definition</i>
Z	-Nonreparable item. When unserviceable, condemn and dispose at the level indicated in position 3.

c. National Stock Number. Indicates the National stock number assigned to the item and will be used for requisitioning purposes.

d. Part Number. Indicates the primary number used by the manufacturer (individual, company, firm, corporation, or Government activity), which controls the design and characteristic of the item by means of its engineering drawings, specifications, standards, and inspection requirements to identify an item or range of items.

NOTE

When a stock numbered item is requisitioned, the repair part received may have a different part number than the part being replaced.

e. Federal Supply Code for Manufacturer (FSCM). The FSCM is a 5-digit numeric code listed in SB 708-42 which is used to identify the manufacturer, distributor, or Government agency, etc.

f. Description. Indicates the Federal item name and if required a minimum description to identify the item.

g. Unit of Measure (U/M). Indicates the standard of the basic quantity of the listed item as used in performing the actual maintenance function. This measure is expressed by a two-character alphabetical abbreviation (e.g., ea, in, pr, etc). When the unit of measure differs from the unit of issue, the lowest unit of issue that will satisfy the required units of measure will be requisitioned.

h Quantity Incorporated in Unit. Indicates the quantity of the item used in the breakout shown on the illustration figure, which is prepared for a functional group, subfunctional group, or an assembly.

4. Special Information

a. Usable on codes are shown in the description column. Uncoded items are applicable to all models. Identification of the usable on codes used in this publication are:

<i>Code</i>	<i>Used on</i>
4PW	RL-172/G
2QW	RL-172A/G

b. The following publications pertain to the RL-172/G and RL-172A/G and its components
 TM 11-3895-207-10, Reeling Machines, Cable, Motor Driven RL-172/G and RL172A/G
 TM 11-3895-207-20, Reeling Machines, Cable, Motor Driven RL-172/G and RL-172A/G

c. The illustrations in this manual are identical to those published in TM 11-3895-207-34P. Only those parts assigned the third position SMR maintenance code "C" or "0" are listed in the tabular listing therefore, there may be a break in the item number se-

quence. Only illustrations containing organizational authorized items appear in this manual.

5. How to Locate Repair Parts

a. When National stock number or part number is unknown.

(1) *First.* Using the table of contents, determine the functional group within which the item belongs. This is necessary since illustrations are prepared for functional groups and listings are divided into the same groups.

(2) *Second.* Find the illustration covering the functional group to which the item belongs.

(3) *Third.* Identify the item on the illustration and note the illustration figure and item number of the item.

(4) *Fourth.* Using the Repair Parts Listing, find the figure and item number noted on the illustration.

b. When National stock number or part number is known.

(1) *First.* Using the Index of National Stock Numbers and Part Numbers, find the pertinent National stock number or part number. This index is in NIIN sequence followed by a list of part numbers in alphameric sequence, cross-referenced to the illustration figure number and item number.

(2) *Second.* After finding the figure and item number, locate the figure and item number in the repair parts list.

6. Abbreviations

Not applicable.

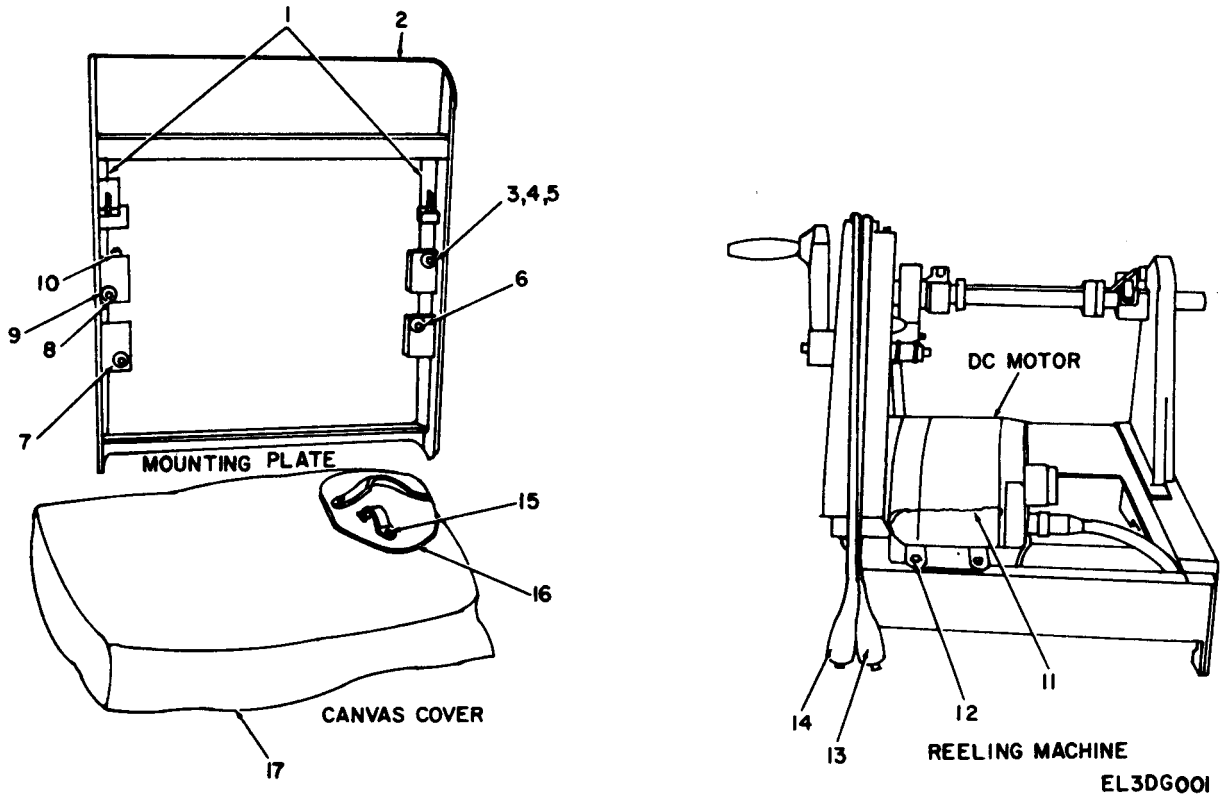
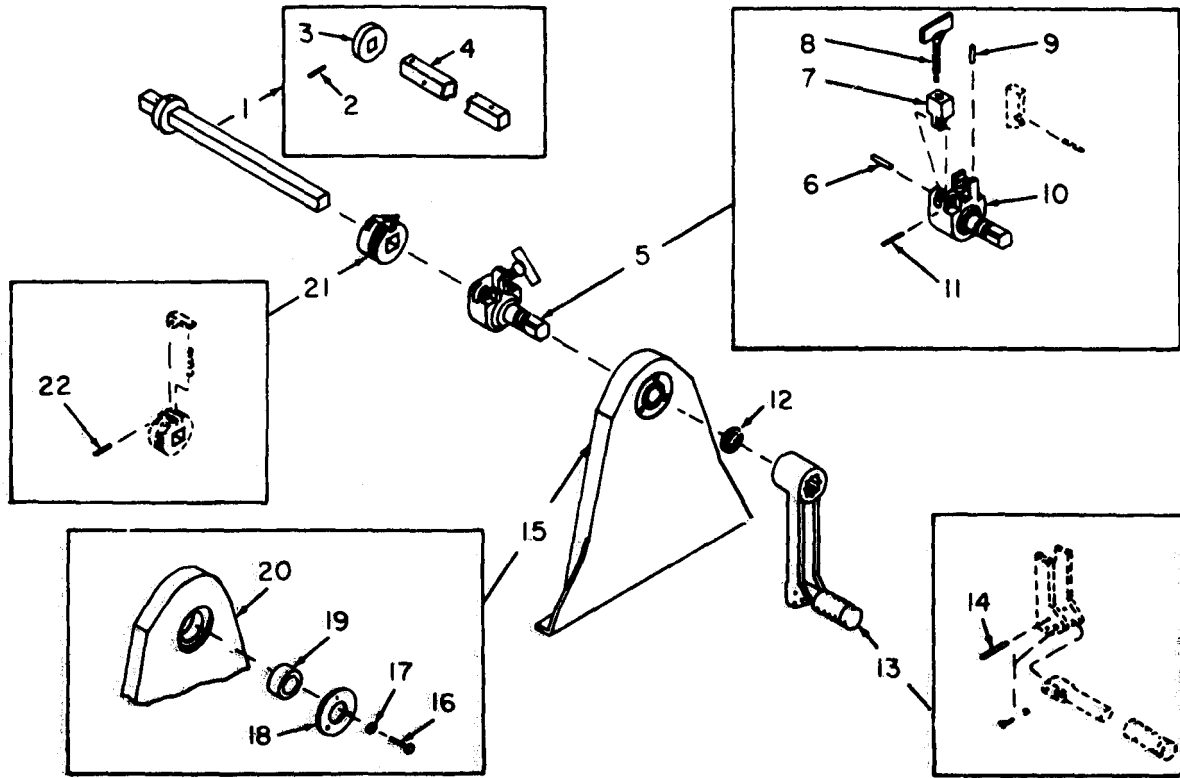


Figure 1. Reeling Machines, Cable, Motor Driven RL-172/G and RL-172A/G.

(1) ILLUSTRATION		(2)	(3)	(4)	(5)	(6)	(7)	(8)
(a) FIG NO.	(b) ITEM NO.	SMR CODE	NATIONAL STOCK NUMBER	PART NUMBER	FSCM	DESCRIPTION	USABLE ON CODE	QTY INC IN UNIT
						GROUP 00 REELING MACHINE, CABLE, MOTOR DRIVEN RL-172/G AND RL-172A/G		
1	7	PAOZZ	5305-00-269-3223	MS90725-73	96906	SCREW, CAP HEXAGON	2QM	EA 4
1	16	PAOZZ	8415-00-498-9444	SCD6371	80063	PAD LC-80 ASSEMBLY		EA 1
1	17	PAOZZ	3895-00-919-4237	SMC425423	80063	COVER, CANVAS		EA 1



EL3DG002

Figure 2. Reeling Machines, Cable, Motor Driven RL-172/G and RL-172A/G, Reel Shaft Support (Crank Side), Exploded View.

(1) ILLUSTRATION		(2)	(3)	(4)	(5)	(6) DESCRIPTION	(7)	(8)
(a) FIG NO	(b) ITEM NO	SMR CODE	NATIONAL STOCK NUMBER	PART NUMBER	FSCM	USABLE ON CODE	U/M	QTY INC IN UNIT
2	1	PA0ZZ	3895-00-802-2618	SMC425340	80063	AXLE-ASSEMBLY	1	
2	13	PA0ZZ	3895-00-802-2617	SMC425358	80063	CRANK ASSEMBLY, HAND	1	
2	21	PA0ZZ	3895-00-802-2619	SMC425343	80063	ADJUST COLLAR ASSEMBLY	1	

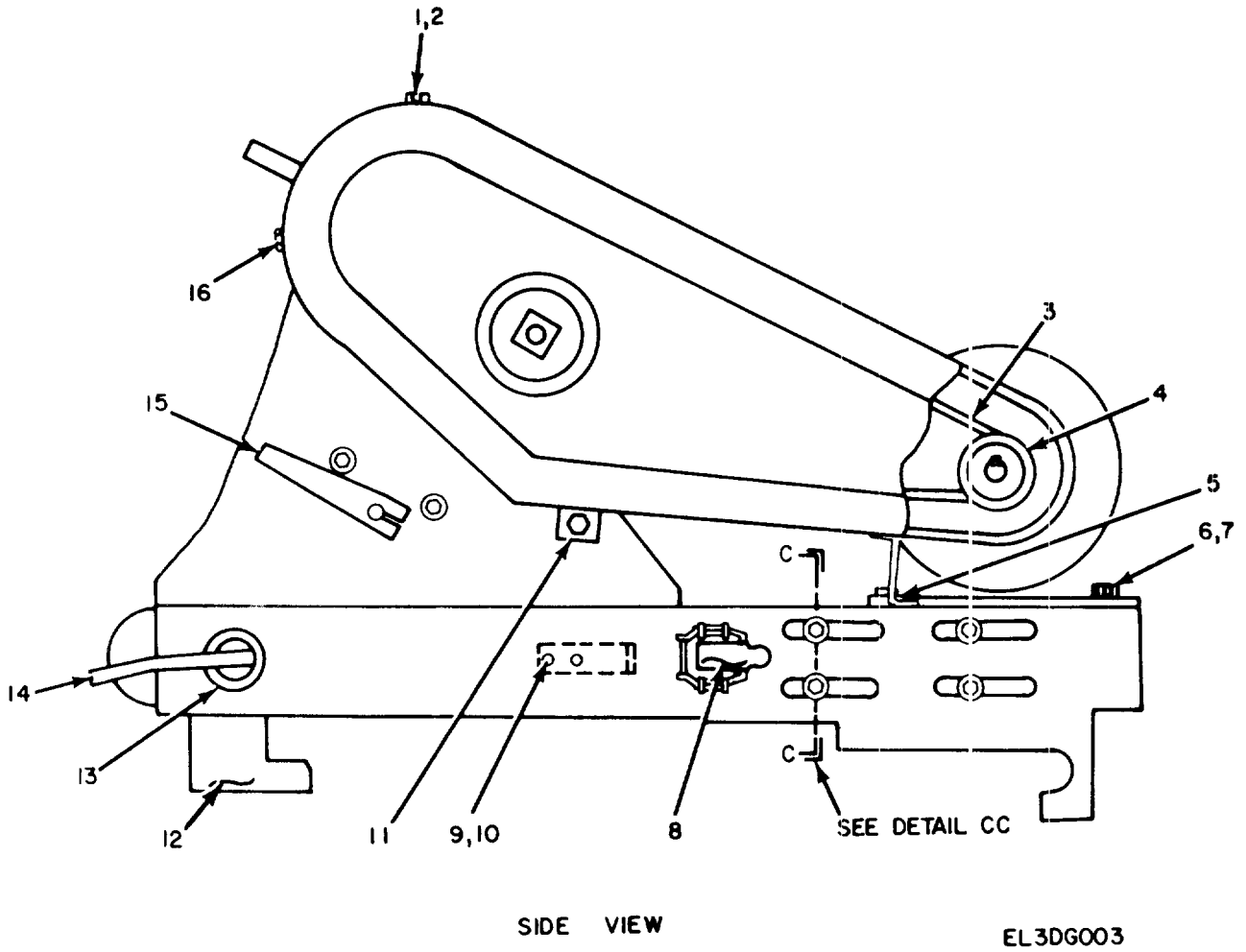


Figure 3. Reeling Machines, Cable, Motor Driven RL-172/G and RL-172A/G (Sheet 1 of 3).

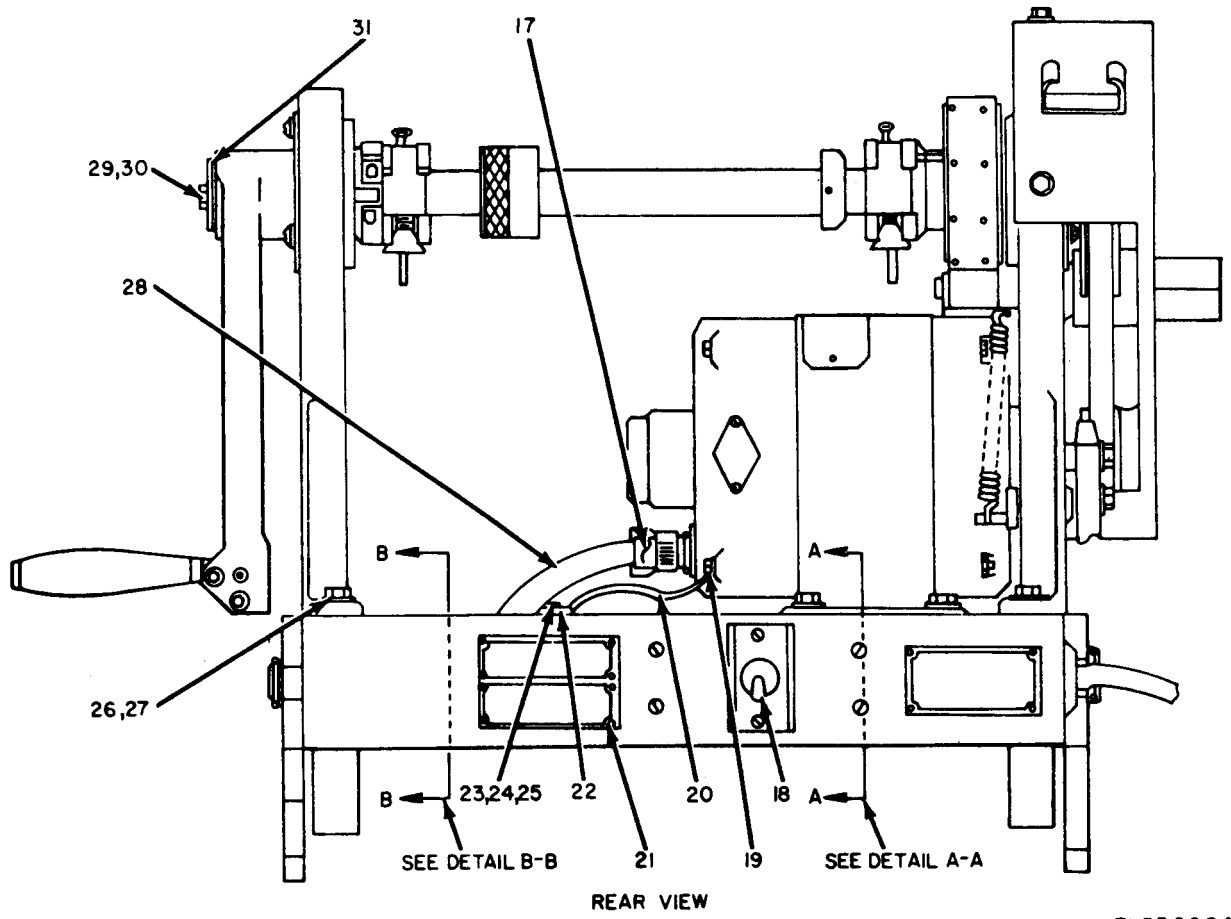


Figure 3. Reeling Machines, Cable, Motor Driven RL-172/G and RL-172A/G (Sheet 2 of 3).

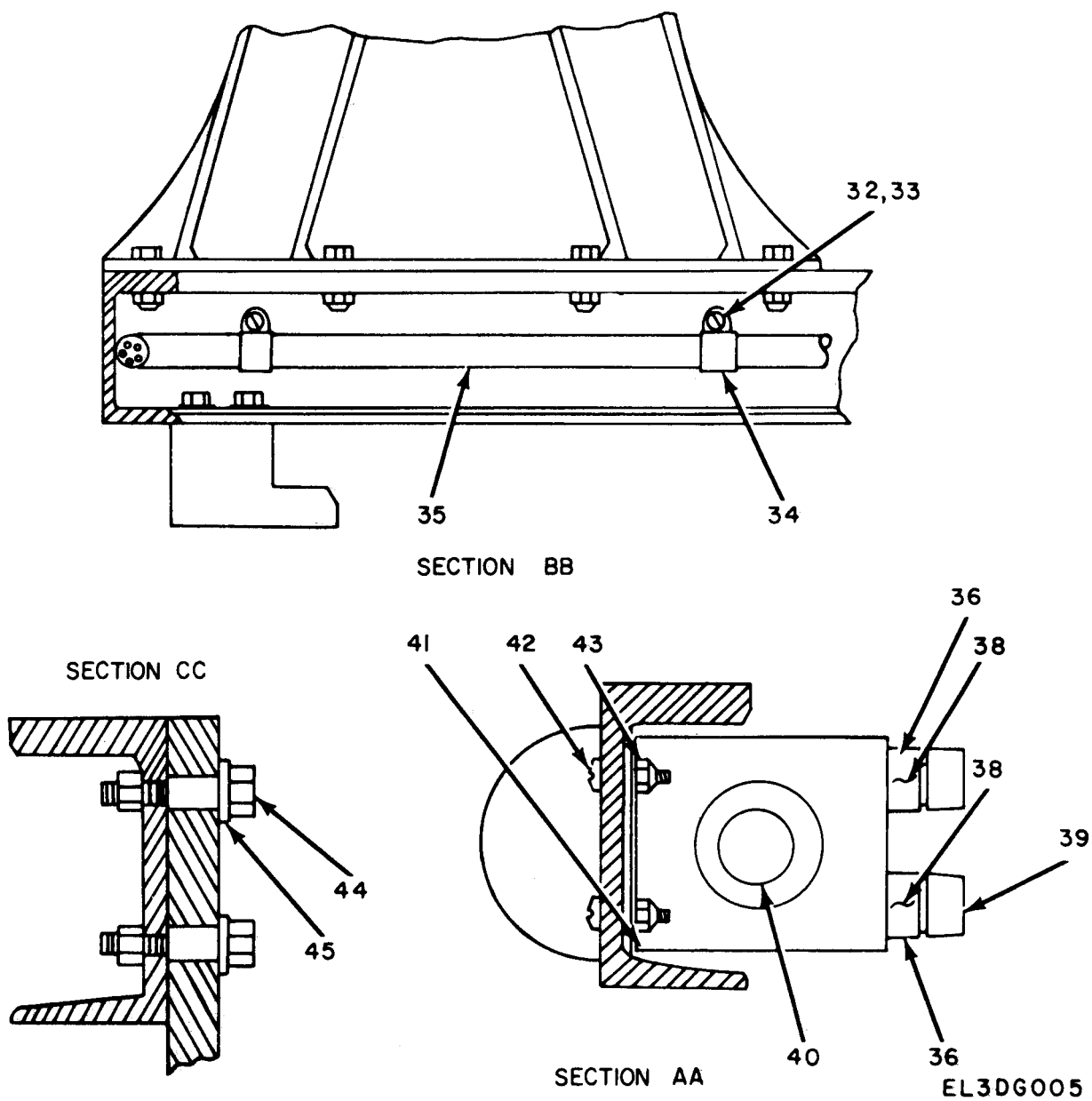
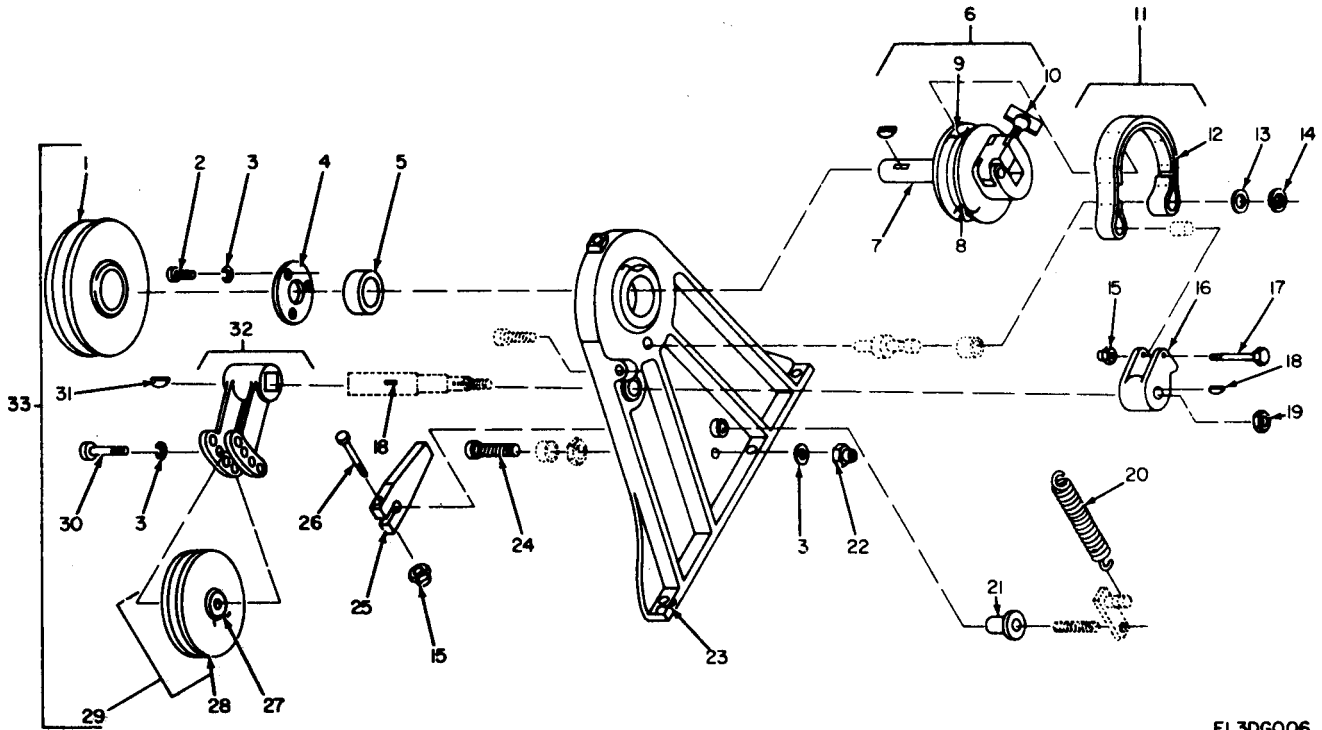


Figure 3. Reeling Machines, Cable, Motor Driven RL-172/G and RL-172A/G (Sheet 3 of 3).

REPAIR PARTS LIST							
(1)	(2)	(3)	(4)	(5)	(6)	(7)	(8)
ILLUSTRATION		NATIONAL STOCK NUMBER		PART NUMBER	DESCRIPTION	U/M	QTY INC IN UNIT
(A)	(B)	SMR					
FIG NO.	ITEM NO.	CODE	NUMBER	NUMBER	FSCM	USABLE ON CODE	
3	3	PAOZZ	3030-00-554-8315	SMB425334	80063	BELT	EA 1
3	38	PAOZZ	5920-00-686-9512	MS90081-14	96906	"FUSE, CARTRIDGE"	EA 2
3	39	PAOZZ	5920-00-878-7770	6775	71400	"CAP, ELECTRICAL"	EA 2



EL3DGO06

Figure 4. Reeling Machines, Cable, Motor Driven RL-172/G and RL-172A/G, Reel Shaft Support (Belt Side), Exploded View.

(1) ILLUSTRATION		(2)	(3)	(4)	(5)	(6)	(7)	(8)
(a) FIG NO.	(b) ITEM NO.	SMR CODE	NATIONAL STOCK NUMBER	PART NUMBER	FSCM	DESCRIPTION	USABLE ON CODE	QTY INC IN UNIT
4	11	PAOZZ	3895-00-802-2623	SMC425324	80063	BRAKE BAND ASSEMBLY		EA 1

NATIONAL STOCK NUMBER AND PART NUMBER INDEX

STOCK NUMBER	FIGURE NO.	ITEM NO.	STOCK NUMBER	FIGURE NO.	ITEM NO.
5305-00-269-3223	1	7	3895-00-802-2619	2	21
8415-00-498-9444	1	16	3895-00-802-2623	4	11
3030-00-554-8315	3	3			
5920-00-686-9512	3	38	5920-00-878-7770	3	39
3095-00-802-2617	2	13	3895-00-919-4237	1	17
3893-00-802-2618	2	1			

PART NUMBER	FSCM	FIG. NO.	ITEM NO.	PART NUMBER	FSCM	FIGURE NO.	ITEM NO.
				SMC425340	80063	2	21
MS90081-14	96906	3	38	SMC425343	80063	2	13
SCD6371	80063	1	16	SMC425423	80063	1	17
SMB425324	80063	4	11	6775	71400	3	39
SMB425334	80063	3	3				

By Order of the Secretary of the Army

BERNARD W. ROGERS
General, United States Army
Chief of Staff

Official: PAUL T. SMITH
Major General, United States Army
The Adjutant General

Distribution:

Active Army:

USASA (2)	5-155	6-615
COE (1)	5-145	6-616
TSG (1)	5-146	6-617
USMRENB (1)	5-156	6-619
DARCOM (1)	6-37	7
TRADOC (2)	6-100	7-15
OS Maj Comd (4)	6-155	7-42
TECOM (2)	6-166	7-45
USACC (4)	6-167	7-100
MDW (1)	6-175	7-102
Armies (2)	6-185	11-97
Corps (2)	6-186	11-98
HISA (Ft Monmouth) (33)	6-200	11-98
Svc Colleges (1)	6-201	11-117
USASIGS (5)	6-216	11-127
USAADS (2)	6-300	11-215
USAFAS (2)	6-347	11-217
USAARMS (2)	6-365	11-302
USAIS (2)	6-401	11-(500) (AA-AC)
USAES (2)	6-405	17
USAICS (3)	6-406	17-51
MAAG (1)	6-407	17-55
USARMIS (1)	6-425	17-100
USAERDAA (1)	6-426	17-102
USAERDAW (1)	6-427	29-75
USMA (2)	6-435	26-76
USACRTC (2)	6-436	29-105
Instl (2) except	6-437	29-134
Fort Gillem (10)	6-445	26-136
Fort Huachuca (10)	6-447	37
Fort Carson (5)	6-455	37-100
Fort Gordon (10)	6-456	37-102
LBAD (14)	6-457	44-2
SAAD (30)	6-467	44-12
TOAD (14)	6-502	44-85
SHAD (3)	6-525	44-88
Ft Richardson (ECOM) (2)	6-526	44-235
Sig FLDMS (1)	6-555	44-236
Units org under fol TOE	6-556	55-16
(1 cy each unit)	6-557	57
5-25	6-558	57-100
5-26	6-575	77-100
5-35	6-576	44-535
5-36	6-577	44-536

NG: State AG (3) Units-Same as Active Army except allowance is one copy per unit.

USAR: None

For explanation of abbreviations used, see AR 310-50.



SOMETHING WRONG WITH THIS MANUAL?

THEN... JOT DOWN THE DOPE ABOUT IT ON THIS FORM, TEAR IT OUT, FOLD IT AND DROP IT IN THE MAIL!

FROM: (YOUR UNIT'S COMPLETE ADDRESS)

Commander
Stateside Army Depot
ATTN: AMSTA-US
Stateside, N.J. 07703

DATE 10 July 1975

PUBLICATION NUMBER

TM 11-5840-340-12

DATE

23 Jan 74

TITLE

Radar Set AN/SPC-76

BE EXACT... PIN-POINT WHERE IT IS

IN THIS SPACE TELL WHAT IS WRONG AND WHAT SHOULD BE DONE ABOUT IT:

PAGE NO.	PARA-GRAPH	FIGURE NO.	TABLE NO.
2-25	2-28		
3-10	3-3		3-1
5-6	5-8		
		F03	

Recommend that the installation antenna alignment procedure be changed throughout to specify a 2° IFF antenna lag rather than 1°.

REASON: Experience has shown that with only a 1° lag, the antenna servo system is too sensitive to wind gusting in excess of 25 knots, and has a tendency to rapidly accelerate and decelerate as it hunts, causing strain to the drive train. Hunting is minimized by adjusting the lag to 2° without degradation of operation.

Item 5, Function column. Change "2 db" to "3db."

REASON: The adjustment procedure for the TRANS POWER FAULT indicator calls for a 3 db (500 watts) adjustment to light the TRANS POWER FAULT indicator.

Add new step f.1 to read, "Replace cover plate removed in step e.1, above."

REASON: To replace the cover plate.

Zone C 3. On J1-2, change "+24 VDC to "+5 VDC."

REASON: This is the output line of the 5 VDC power supply. + 24 VDC is the input voltage.

TEAR ALONG DOTTED LINE

TYPED NAME, GRADE OR TITLE, AND TELEPHONE NUMBER

SSG I. M. DeSpirito 999-1776

SIGN HERE:

SSG I. M. DeSpirito

DA FORM 2028-2 (TEST) 1 AUG 74

P.S.--IF YOUR OUTFIT WANTS TO KNOW ABOUT YOUR MANUAL "FIND," MAKE A CARBON COPY OF THIS AND GIVE IT TO YOUR HEADQUARTERS.

HISA 1686-75



SOMETHING WRONG WITH THIS MANUAL?

THEN... JOT DOWN THE DOPE ABOUT IT ON THIS FORM, TEAR IT OUT, FOLD IT AND DROP IT IN THE MAIL!

FROM: (YOUR UNIT'S COMPLETE ADDRESS)

DATE

PUBLICATION NUMBER

DATE

TITLE

BE EXACT... PIN-POINT WHERE IT IS

IN THIS SPACE TELL WHAT IS WRONG AND WHAT SHOULD BE DONE ABOUT IT:

PAGE NO.

PARA-GRAPH

FIGURE NO.

TABLE NO.

TEAR ALONG DOTTED LINE

TYPED NAME, GRADE OR TITLE, AND TELEPHONE NUMBER

SIGN HERE:

FILL IN YOUR
UNIT'S ADDRESS

FOLD BACK

DEPARTMENT OF THE ARMY

Commander
US Army Electronics Command
ATTN: DRSEL-MA-Q
Fort Monmouth, New Jersey 07703

TEAR ALONG DOTTED LINE

FOLD BACK



SOMETHING WRONG WITH THIS MANUAL?

THEN... JOT DOWN THE DOPE ABOUT IT ON THIS FORM, TEAR IT OUT, FOLD IT AND DROP IT IN THE MAIL!

FROM: (YOUR UNIT'S COMPLETE ADDRESS)

DATE

PUBLICATION NUMBER

DATE

TITLE

BE EXACT... PIN-POINT WHERE IT IS

IN THIS SPACE TELL WHAT IS WRONG AND WHAT SHOULD BE DONE ABOUT IT:

PAGE NO.

PARA-GRAPH

FIGURE NO.

TABLE NO.

TEAR ALONG DOTTED LINE

TYPED NAME, GRADE OR TITLE, AND TELEPHONE NUMBER

SIGN HERE:

FILL IN YOUR
UNIT'S ADDRESS

FOLD BACK

DEPARTMENT OF THE ARMY

Commander
US Army Electronics Command
ATTN: DRSEL-MA-Q
Fort Monmouth, New Jersey 07703

TEAR ALONG DOTTED LINE

FOLD BACK



SOMETHING WRONG WITH THIS MANUAL?

THEN... JOT DOWN THE DOPE ABOUT IT ON THIS FORM, TEAR IT OUT, FOLD IT AND DROP IT IN THE MAIL!

FROM: (YOUR UNIT'S COMPLETE ADDRESS)

DATE

PUBLICATION NUMBER

DATE

TITLE

BE EXACT... PIN-POINT WHERE IT IS

IN THIS SPACE TELL WHAT IS WRONG AND WHAT SHOULD BE DONE ABOUT IT:

PAGE NO.

PARA-GRAPH

FIGURE NO.

TABLE NO.

TEAR ALONG DOTTED LINE

TYPED NAME, GRADE OR TITLE, AND TELEPHONE NUMBER

SIGN HERE:

FILL IN YOUR
UNIT'S ADDRESS

FOLD BACK

DEPARTMENT OF THE ARMY

Commander
US Army Electronics Command
ATTN: DRSEL-MA-Q
Fort Monmouth, New Jersey 07703

TEAR ALONG DOTTED LINE

FOLD BACK

